



294 HENDRIX | Reclining Furniture

Style, comfort and storage.....all in one! The Hendrix Collection offers a transitional silhouette with a flare arm, pillow top seating, and hidden storage compartments. Offered as a sofa/loveseat and sectional configurations, this unique group offers your family ultimate comfort with impeccable style.

 **Lane**
HOME FURNISHINGS
Entertain. Engage. Escape.

294 | HENDRIX Reclining Furniture

AVAILABLE SKU'S

294-04 WEDGE

Overall Dimensions: W.48 D.41 H.44
Seat Dimensions: W.45 D.23 H.24



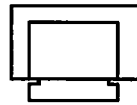
294-09 ARMLESS RECLINER

Overall Dimensions: W.26 D.40 H.44
Seat Dimensions: W.26 D.23 H.24



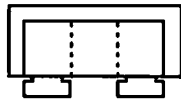
294-14 SNUGLER RECLINER

Overall Dimensions: W.52 D.41 H.44
Seat Dimensions: W.30 D.23 H.24



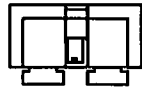
294-36 DOUBLE RECLINING SOFA W/STORAGE DRAWER

Overall Dimensions: W.86 D.41 H.44
Seat Dimensions: W.63 D.23 H.24



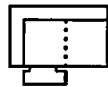
294-43 DOUBLE RECLINING LOVESEAT W/CONSOLE

Overall Dimensions: W.77 D.41 H.44
Seat Dimensions: W.54 D.23 H.24



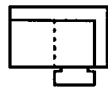
294-71 LAF 1-ARM RECLINING LOVESEAT W/DRAWER

Overall Dimensions: W.54 D.41 H.44
Seat Dimensions: W.43 D.23 H.24



294-72 RAF 1-ARM RECLINING LOVESEAT W/DRAWER

Overall Dimensions: W.54 D.41 H.44
Seat Dimensions: W.43 D.23 H.24



294-98 MATCHING ROCKER RECLINER

Overall Dimensions: W.42 D.40 H.44
Seat Dimensions: W.20 D.22 H.23



ALSO AVAILABLE IN:

4804-21

4804-22

23/5/23-20

23/5/23-23

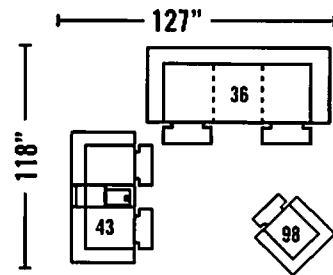
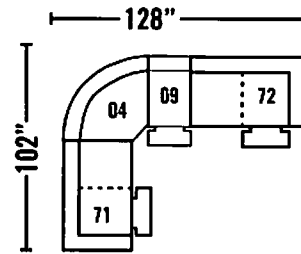
SIMPLE SOLUTIONS

 SIMPLE SOLUTIONS



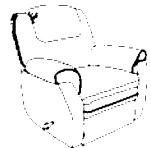
05/10

POPULAR CONFIGURATIONS

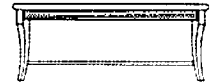


RECOMMENDED CORRELATES

294-98 HENDRIX
Matching Rocker Recliner



11754 URBANA
Correlate Occasional Tables



11944 ARLINGTON
Correlate Occasional Tables



This tearpad is property of Lane Furniture Industries, Inc., and possession does not constitute authority to purchase furniture. Specifications shown are subject to change without notice. ©2010 Lane Furniture Industries, Inc.

 **Lane**[®]
HOME FURNISHINGS
Entertain. Engage. Escape.
WWW.LANEFURNITURE.COM